



CSV-1381 QUICK INSTALLATION GUIDE

3 to 1 HDMI™ 8K60Hz / 4K120Hz Switch

Thank you for purchasing our CSV-1381 Product. After unpacking the product, please make sure you have all the items provided and check for any damages. In case of any missing/damaged parts please inform your supplier immediately.

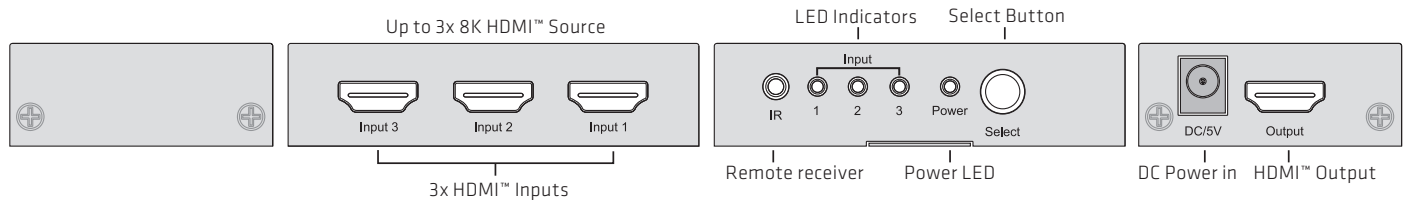
You should have:

- Club 3D CSV-1381 3 to 1 HDMI™ 8K60Hz Switch
- IR Remote controller (incl CR2025 Battery)
- Power Supply 100-240VAC/ 5V1A DC(Please Specify Plug type when ordering)
- QR Code for downloading the Quick Install Guide (QIG)

The Club 3D CSV-1381 is a 3 to 1 HDMI™2.1a spec. Switch that routes your high-definition video and digital audio from any one of the HDMI™ inputs to an 8K60Hz/4K120Hz HDMI™ output. The easiest way of connecting your High-Resolution game consoles and/or your PC/Laptop to 1 High-Resolution HDMI™ display up to 8K60Hz or 4K120Hz. All inputs are capable to accommodate up to 8K60Hz/4K120Hz highdefinition video sources simultaneously. The output sends the high-definition audio/video signals to a high definition(8K60Hz) HDMI™2.1a spec. Display. Switching inputs can be done by key pressing, on the unit itself, or with an IR remote unit for easy switching.



Included: Power Adapter

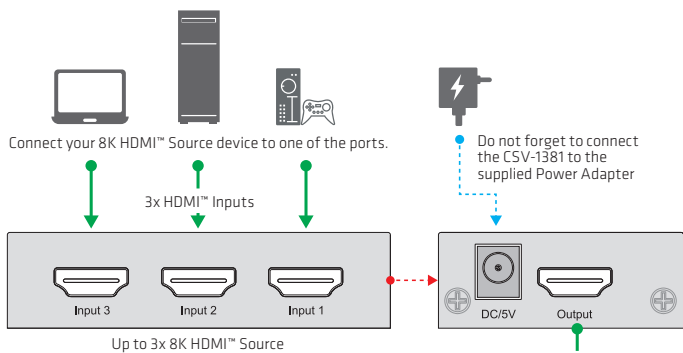


- On the Remote controller, please remove the protective insulation from the battery to make it operational
- Please connect your Display to the Connector marked Output
- Connect your various source equipment to the respective Input connectors
- Connect the Power supply to the DC Power Input jack
- Select your desired input by pressing the Select button on the front of the unit- or- by pressing the desired Input number on the remote controller or press the forward/backward arrows till the desired Input is selected. The selected input will be lit on the front of the unit.

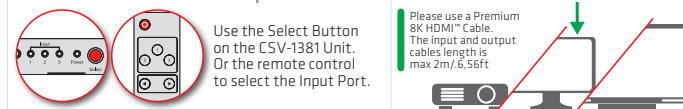
In case you need support with choosing the correct HDMI™ cables, don't hesitate to contact us and it will be our pleasure to assist you.

NOTE:

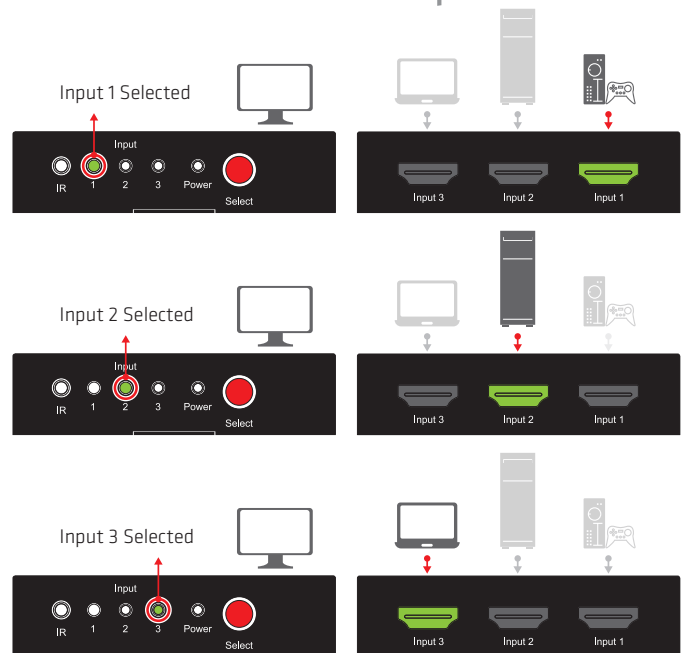
- Please update your TV Firmware to the version which supports these resolutions/refresh rates!
- Please update your Graphic drivers on your PC and make sure that DSC1.2 is supported on your devices to support the these resolutions/refresh rates!



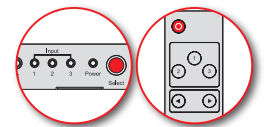
How to select the Input Source



How to select the Input Source



Use the Select Button on the front panel of the CSV-1381 Unit. Or the remote control (number 1,2,3 or use the forward/backward arrows) to select the Input Port.



w e connect

Disclaimer: While we endeavour to provide the most accurate, up-to-date information available, the content on this document may be out of date or include omissions, inaccuracies or other errors. Products might obtain a certification during their lifetime. This doesn't change or alter the product specifications and/or performance in any way. Club 3D will provide the updated information on their website www.Club-3d.com at her discretion. Therefore Club 3D does not accept any rights claimed on the content of this document. Please refer to a full overview of our Legacy Terms and Conditions on www.club-3d.com. All other brand names are trademarks or registered trademarks and are the property of their respective owners. All content is subject to change without prior notice.